

NGSSQuirreL for Sybase ASE



Protecting the security of enterprise database servers is of paramount importance and in an age of ever escalating threats, ensuring that sensitive data remains confidential is a significant concern to many organisations. Ensuring that database security is adequately maintained is a challenge that many organisations face. A challenge that must be met and overcome, if the risks posed by security threats are to be minimised.

Sybase is a relational database management system that forms an integral part of enterprise deployments. In an enterprise environment that demands high factors of performance, scalability and reliability, Sybase delivers. Sophisticated back office systems present a range of vulnerabilities and risk factors, which can lead to a decrease in productivity, lost revenues, and stolen data. NGSSQuirreL for Sybase ASE is an innovative vulnerability assessment tool specifically developed to scan Sybase database environments. NGSSQuirreL for Sybase ASE allows system administrative staff to quickly and easily discover a range of vulnerabilities on their servers before attackers do. Unlike many of the conventional applications available, NGSSQuirreL for Sybase ASE allows users to generate bespoke solutions that can be applied to servers at the click of a button, ensuring that the security of their databases is maintained.

» Product Overview

NGSSQuirreL for Sybase ASE forms part of NGSSoftware's suite of Intelligent Next Generation Security Assessment tools, it enables network administrators and security professionals alike to quickly audit the security of Sybase ASE server infrastructures.

NGSSQuirreL for Sybase ASE enables systems administrators and security professionals to quickly and easily assess Sybase ASE for a variety of security vulnerabilities and deficits. The application comprehensively scans Sybase for thousands of possible security threats. NGSSQuirreL for Sybase ASE allows users to quickly find faults and weaknesses in their database environment, before malicious attackers do. Unlike most other applications that only find 'holes' in security infrastructures, NGSSQuirreL for Sybase ASE allows system professionals to quickly evaluate the level of risk they are exposed to, and if required, fix the majority of discovered vulnerabilities.

NGSSQuirreL for Sybase ASE is one of the fastest and most comprehensive Sybase security-auditing tools currently available. Designed and developed by the worlds leading vulnerability researchers (who between them have discovered more vulnerabilities than any other company during the last three years), NGSSQuirreL for Sybase ASE is the best defence against threats to your database security.

» Features and Benefits

NGSSQuirreL for Sybase ASE has a number of key benefits, these include:

» Variable Audits

NGSSQuirreL for Sybase ASE permits users to conduct variable levels of audit, namely Quick, Normal and Full. During the course of a quick audit NGSSQuirreL for Sybase ASE will focus on identifying high severity security vulnerabilities. The Normal audit process includes a quick audit as well as informational data (e.g. privileges etc.). The NGSSQuirreL for Sybase ASE Full audit includes quick and normal audits, as well as detailing a variety of other vulnerabilities that servers are not at present exposed to. The unique ability to adjust the depth at which NGSSQuirreL for Sybase ASE conducts an audit allows system administrators to mould the application to their requirements with regards to both time and security.

» Reporting

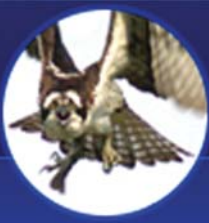
NGSSQuirreL for Sybase ASE provides a range of output formats for scan results. Results can be returned in either plain text, HTML, dynamic HTML, XML, rich text format, Microsoft Excel, or written to a database for later evaluation and analysis.

» Always up to date

Because the security landscape is in a continual state of flux, it is vital that administrators gain access to the latest known vulnerabilities. NGSSQuirreL for Sybase ASE is supplied with an ongoing support contract that allows users to download updated vulnerability definitions for the application database as, and when, they become available. As well as assessing the security of Sybase ASE based upon known vulnerabilities, NGSSQuirreL for Sybase ASE also routinely scans for as yet unpublished vulnerabilities that have been discovered by the NGSSoftware's security research team.

» Comprehensive

NGSSQuirreL for Sybase ASE scours servers for thousands of potential security vulnerabilities. The application routinely checks for patch levels, objects and statement permissions, login and password authentication mechanisms, and stored procedures. A team of globally recognised vulnerability researchers who have secured some of the largest enterprise environments worldwide supports the application. NGSSQuirreL can also perform audits on any Sybase ASE server on any recognised Sybase ASE supported operating system.



NGSSQuirreL for Sybase ASE

» One Click Fix

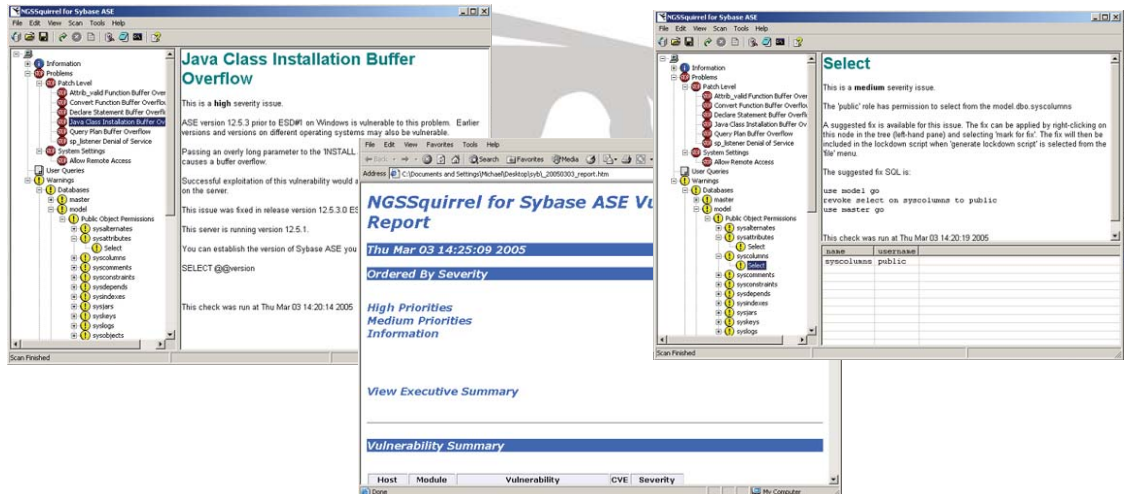
An incredibly useful feature of NGSSQuirreL for Sybase ASE is the ability to generate SQL lockdown scripts. When NGSSQuirreL for Sybase ASE discovers vulnerabilities it generates lockdown scripts that can be employed to remedy any issues automatically. Should systems administrative staff choose to deploy these scripts, they can be used to patch the servers at a click of a mouse.

» Other Features and Benefits

Checks for start-up procedures, stored procedures and tables. NGSSQuirreL for Sybase ASE also checks for a wide variety of obscure backdoor vulnerabilities.

» System Requirements

- System: Microsoft Windows NT 4.0 (Service pack 6a)
- Microsoft Windows Server 2003
- Microsoft Windows 2000
- Microsoft Windows XP
- Hardware: 500MHz Pentium III (minimum)
- Memory: 512Mb RAM (minimum)
- Diskspace: 20Mb free disk space
- Other Software Requirements: Sybase Adaptive Server Enterprise Database



» Contact Details